

Performance Report for:  
https://api-dev.drreddys.com/news

Report generated: Thu, Sep 11, 2025 11:00 PM -0700  
Test Server Location: Vancouver, Canada  
Using: Chrome 125.0.0.0, Lighthouse 12.3.0

	Performance <b>68%</b>	Structure <b>94%</b>	L. Contentful Paint <b>2.9s</b>	T. Blocking Time <b>47ms</b>	C. Layout Shift <b>0</b>
--	---------------------------	-------------------------	------------------------------------	---------------------------------	-----------------------------

Top Issues

High	Reduce initial server response time <small>FCP</small> <small>LCP</small>	Root document took 1.1s
Med-Low	Use a Content Delivery Network (CDN)	40 resources found
Med-Low	Serve static assets with an efficient cache policy	Potential savings of 133KB
Low	Avoid an excessive DOM size <small>TBT</small>	1,222 elements
Low	Allow back/forward cache restoration	2 failure reasons

Focus on these audits first

These audits likely have the largest impact on your page performance.

Structure audits do not directly affect your Performance Score, but improving the audits seen here can help as a starting point for overall performance gains.

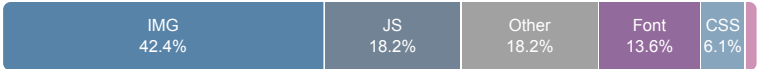
Page Details



Total Page Size - 1.00MB



Total Page Requests - 66



HTML JS CSS IMG Video Font Other

How does this affect me?

Modern web users have a short attention span and expect a fast and seamless website experience. Delivering that fast experience can result in more traffic, more conversions, and more happiness.

As if you didn't need more incentive, **Google use Page Speed and Page Experience (including Web Vitals) signals in their ranking algorithm.**

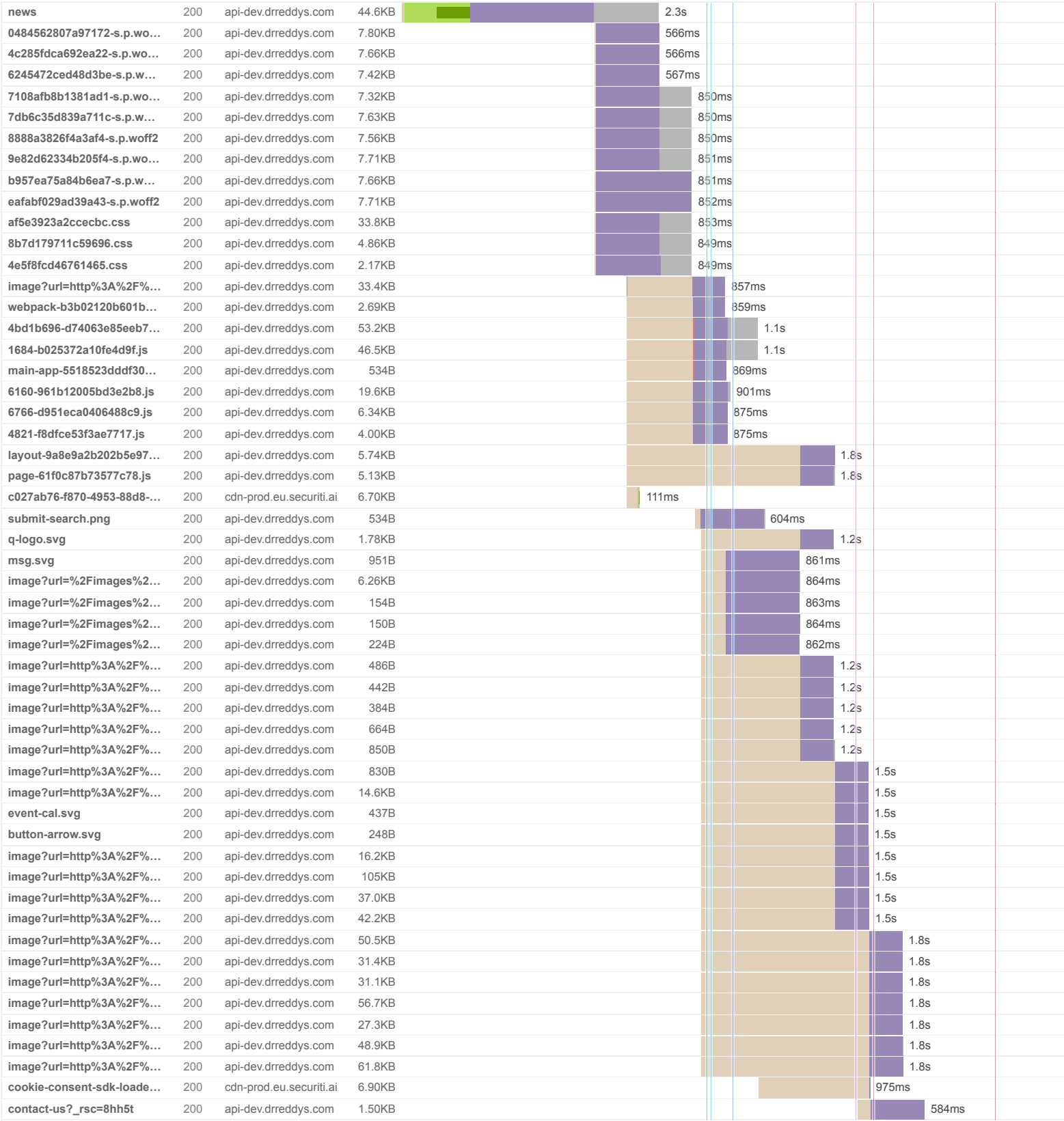
About GTmetrix

GTmetrix was developed as a tool for customers to easily test the performance of their webpages.

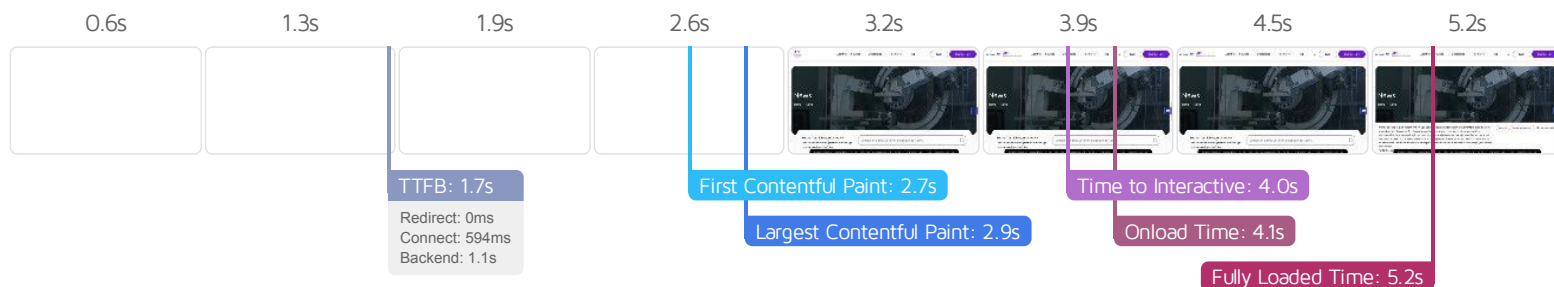
[Learn more about us.](#)

The waterfall chart displays the loading behaviour of your site in your selected browser. It can be used to discover simple issues such as 404's or more complex issues such as external resources blocking page rendering.

News | API Manufacturer and Supplier - Dr. Reddy's



[illegible]



## Performance Metrics

### First Contentful Paint

How quickly content like text or images are painted onto your page. A good user experience is 0.9s or less.

Much longer than recommended

2.7s

### Time to Interactive

How long it takes for your page to become fully interactive. A good user experience is 2.5s or less.

Longer than recommended

4.0s

### Speed Index

How quickly the contents of your page are visibly populated. A good user experience is 1.3s or less.

Much longer than recommended

3.0s

### Total Blocking Time

How much time is blocked by scripts during your page loading process. A good user experience is 150ms or less.

Good - Nothing to do here

47ms

### Largest Contentful Paint

How long it takes for the largest element of content (i.e., a hero image) to be painted on your page. A good user experience is 1.2s or less.

Much longer than recommended

2.9s

### Cumulative Layout Shift

How much your page's layout shifts as it loads. A good user experience is a score of 0.1 or less.

Good - Nothing to do here

0

## Browser Timings

Redirect

0ms

Connect

594ms

Backend

1.1s

TTFB

1.7s

DOM Int.

2.7s

DOM Loaded

2.7s

First Paint

2.7s

Onload

4.1s

Fully Loaded

5.2s

IMPACT	AUDIT	
High	Reduce initial server response time <small>FCP LCP</small>	Root document took 1.1s
Med-Low	Use a Content Delivery Network (CDN)	40 resources found
Med-Low	Serve static assets with an efficient cache policy	Potential savings of 133KB
Low	Avoid an excessive DOM size <small>TBT</small>	1,222 elements
Low	Allow back/forward cache restoration	2 failure reasons
Low	Avoid chaining critical requests <small>FCP LCP</small>	
Low	Avoid long main-thread tasks <small>TBT</small>	2 long tasks found
Low	Properly size images	Potential savings of 207KB
Low	Reduce unused JavaScript <small>LCP</small>	Potential savings of 85.9KB
Low	Reduce JavaScript execution time <small>TBT</small>	664ms spent executing JavaScript
Low	Avoid enormous network payloads <small>LCP</small>	Total size was 1.03MB
N/A	Avoid serving legacy JavaScript to modern browsers <small>TBT</small>	Potential savings of 6.85KB
N/A	Largest Contentful Paint element <small>LCP</small>	2,890 ms
N/A	Avoid large layout shifts <small>CLS</small>	1 layout shift found
N/A	Minimize main-thread work <small>TBT</small>	Main-thread busy for 1.3s
N/A	Reduce the impact of third-party code <small>TBT</small>	Total size was 148KB
N/A	User Timing marks and measures	
N/A	Eliminate render-blocking resources <small>FCP LCP</small>	